



edelweiss

Edelweiss is the peak of exclusive luxury living



*In the heart
of Faqra...*

Life at its Peak

Perched at an altitude of 1,750 meters, Edelweiss is where charming village life meets luxury living. Situated at the heart of Faqra club, Edelweiss is the quintessential Lebanese village with charming homes, cobblestone streets, as well as, Lebanese village square and souk.





Faqra Club has managed to set the standards of luxury living

Faqra Club

Faqra Club, the first mountain resort in Lebanon, has managed to set the standards of luxury living by bringing together all the amenities that make for a great mountain resort while creating a sense of community belongingness.

Faqra Club's great activities including horseback riding, hiking, biking, and grass skiing, a first in the region, make great moments come to life and live on as great memories.





Get in touch with nature

Edelweiss is not a window unto nature, it is living at the heart of nature. Edelweiss is an experience, a brisk walk, a mountain hike, a breath of fresh air, a chance to take full advantage of nature's virtues and in the process build great memories with your family and friends



Edelweiss is a great chance to get in touch with nature and experience living at its purest and simplest.





*Conceptual
Approach*



The Souks

Built to cater to the community, the project's commercial area, dubbed 'The Souks', will offer everything from necessities to luxuries in the upscale boutiques, gourmet shops, and cafés made available for all to enjoy.



*'The Souks', will
offer everything from
necessities to luxuries*





A traditional pedestrian neighborhood

At the heart of Edelweiss is a traditional pedestrian neighborhood where one can escape the noise of the city and enjoy a refreshing walk amidst trees and friends. The young and the young at heart can truly enjoy outdoor life in this gathering spot, where fresh air, chirping birds and rustling trees all come together to complete the full Edelweiss experience.



Residential

Edelweiss is a community of elegant 2-4 bedroom apartments built for comfort and well-being. Ranging between 100 and 220 sqm the residential area is designed to create a convivial space that allows visitors and owners alike to wander along the pedestrian roads and discover the small and big things that make life so special.

Chalet Type

Description

Type A1
Type A2

Two Bedrooms chalet
Two Bedrooms chalet – Garden Level

Type B1
Type B2

Three Bedrooms chalet
Three Bedrooms chalet – Garden Level

Type C2
Type C3

Four Bedrooms chalet
Four Bedrooms chalet – Garden Level





Facilities

Parking

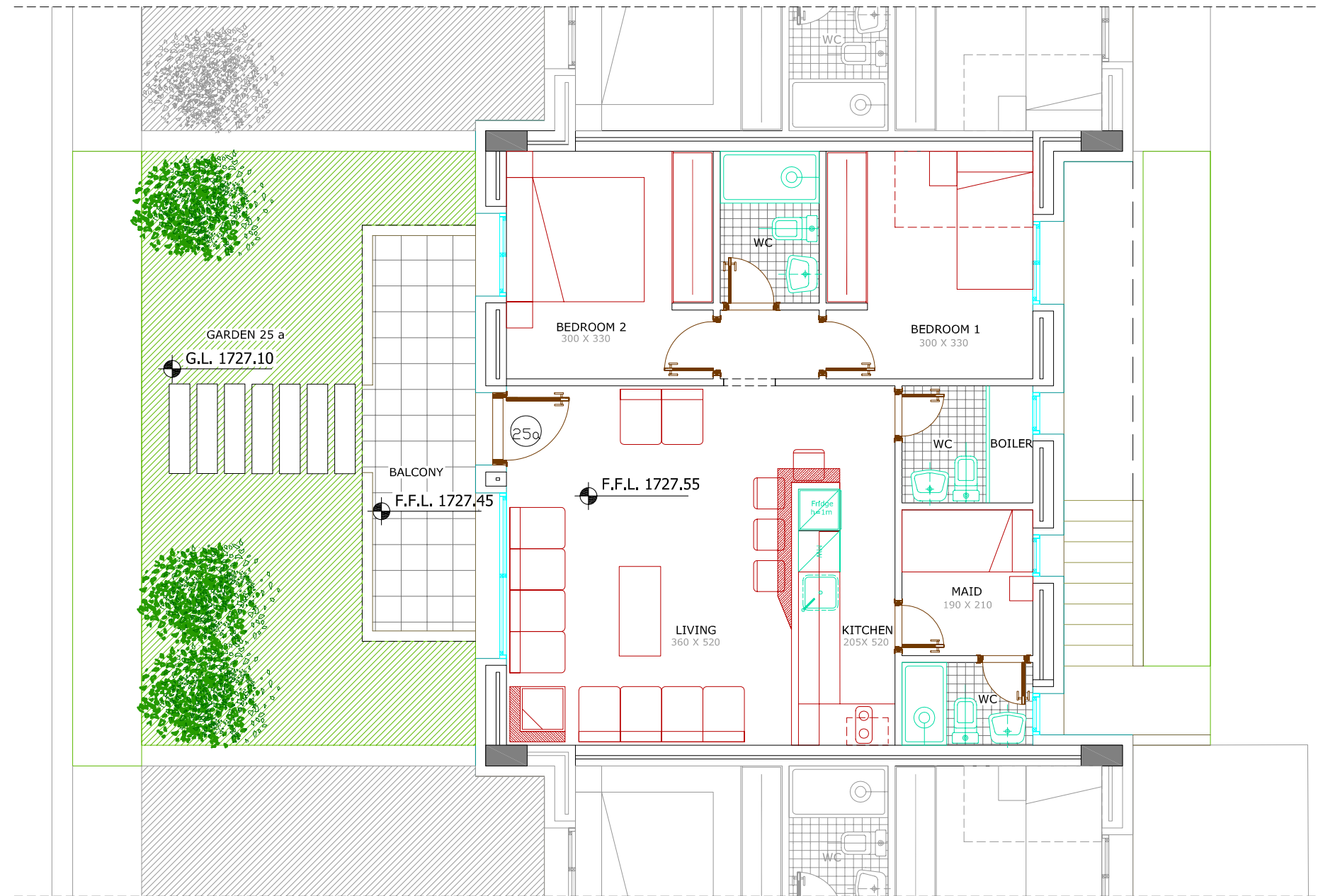
Underground parking is available for every unit so you can leave your car behind and enjoy the good life.

Easy Access

While easy access refers to every unit's effortless access to its quarters from its parking area, it is also worth mentioning that Edelweiss is 7 minutes away from the ski slopes and 40 minutes away from Beirut, which gives easy access a whole new meaning.

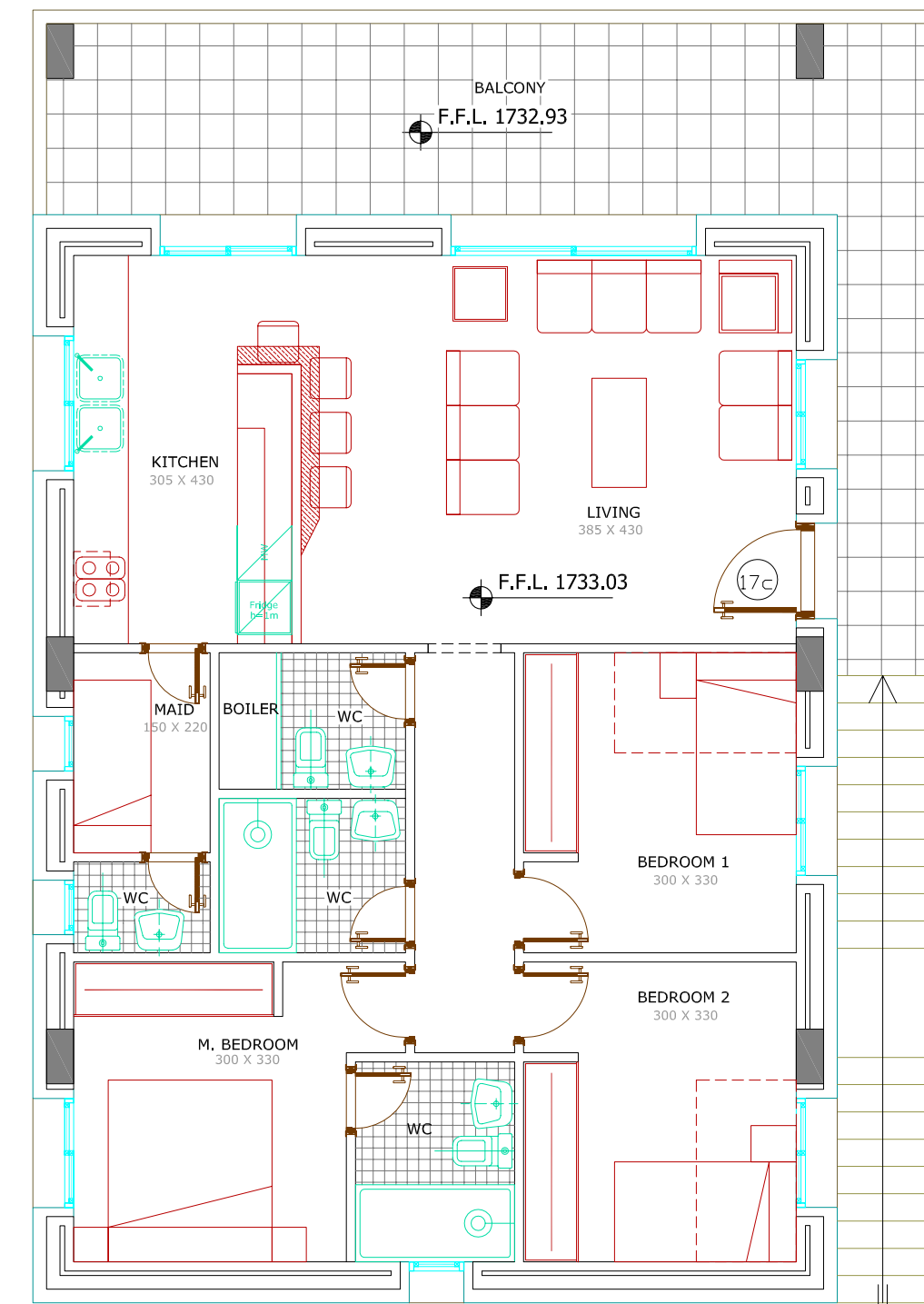


*Types of
Chalets*



Sample of Two Bedrooms Chalet

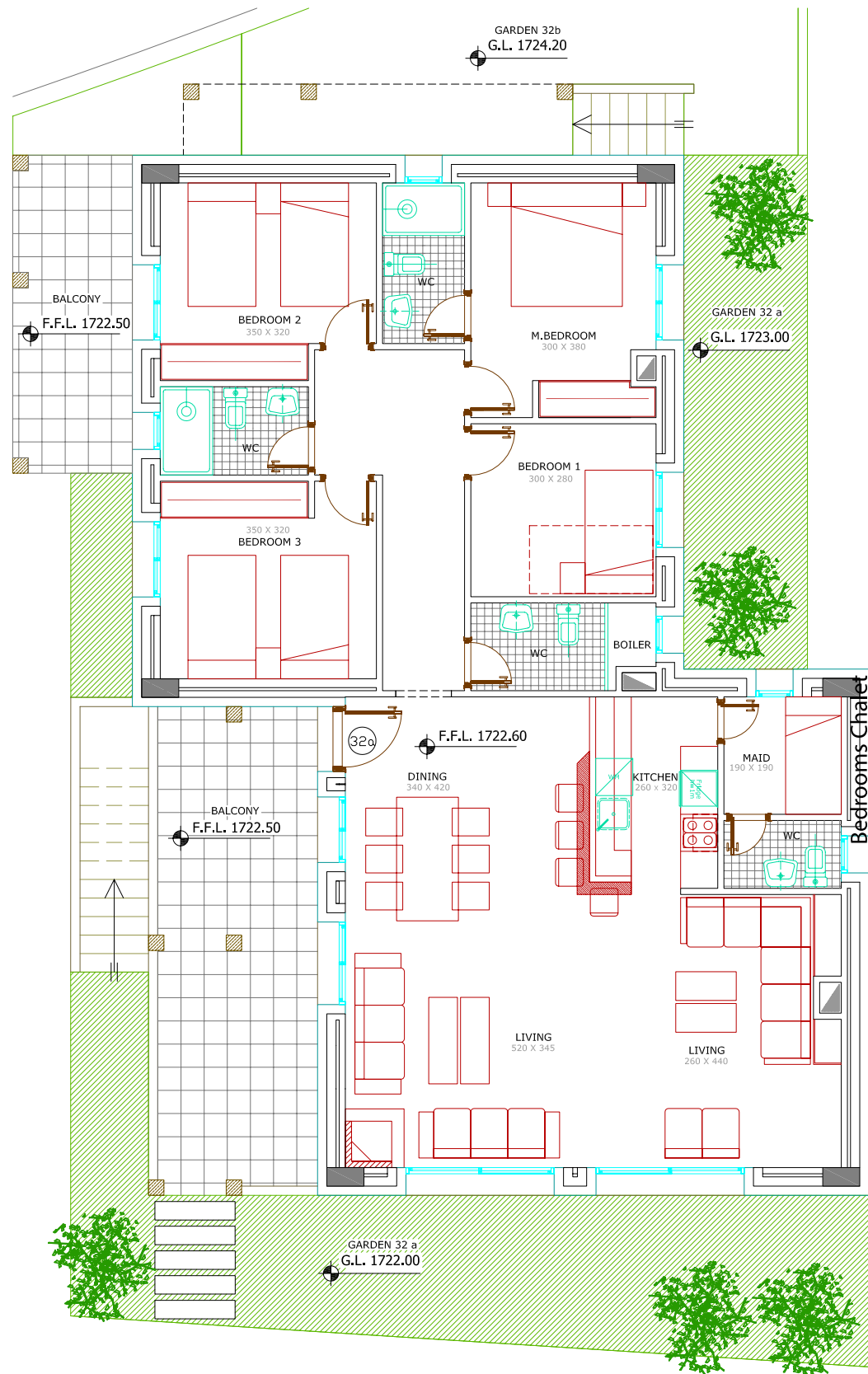
S.W.L. 1728.90



S.W.L. 1728.90

S.W.L. 1728.50

Sample of Three Bedrooms Chalet



Sample of Four Bedrooms Chalet

Behind the Concept



About Brei



BREI, Byblos Real Estate Investment, was established in 1998 by Mr. Karim Bassil with a very clear vision to develop communities that are inspired and inspire cultural pride, to preserve the integrity of Beirut's rich and diverse architectural heritage.

Having said that, integral to BREI's vision is the use of the latest construction technology, practices, and design, making sure that each project developed exceeds company standards, building communities that age well and become even more charming, and, in the process, raising the bar for the industry as a whole. BREI operates with a deep respect for nature, making respect for the environment a fundamental part of the company.

BREI has been true to its vision "inspired by culture, built with innovation" and now is growing through sustainability in every one of its many creations:

- Convivium I- Gemayze
- Convivium II- Gemayze
- Convivium III- Saifi
- Convivium V- Gemayze
- Convivium VII- Beirut Museum area
- Edelweiss- Faqra Club
- Proximus living 1- Fidar

The information contained in this document is provided by **BYBLOS REAL ESTATE INVESTMENT SAL (BREI)** and is for the sole purpose of providing preliminary information to individuals who are considering purchasing properties in the real estate development (the Project) subject of this presentation. We further inform you that any and all information included in this document is indicative and is subject to future modifications.

BREI reserves the right to revise some or all of the information contained in this document and shall not be liable whatsoever due to any changes prior to signing any sales contract.

The Master Plan has been finalized and currently the clients are selecting the chalets they wish to purchase on a first come first served basis.