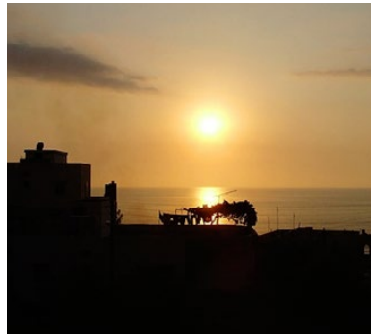




proximus<sup>1</sup> *living*  
a creation by BREI 

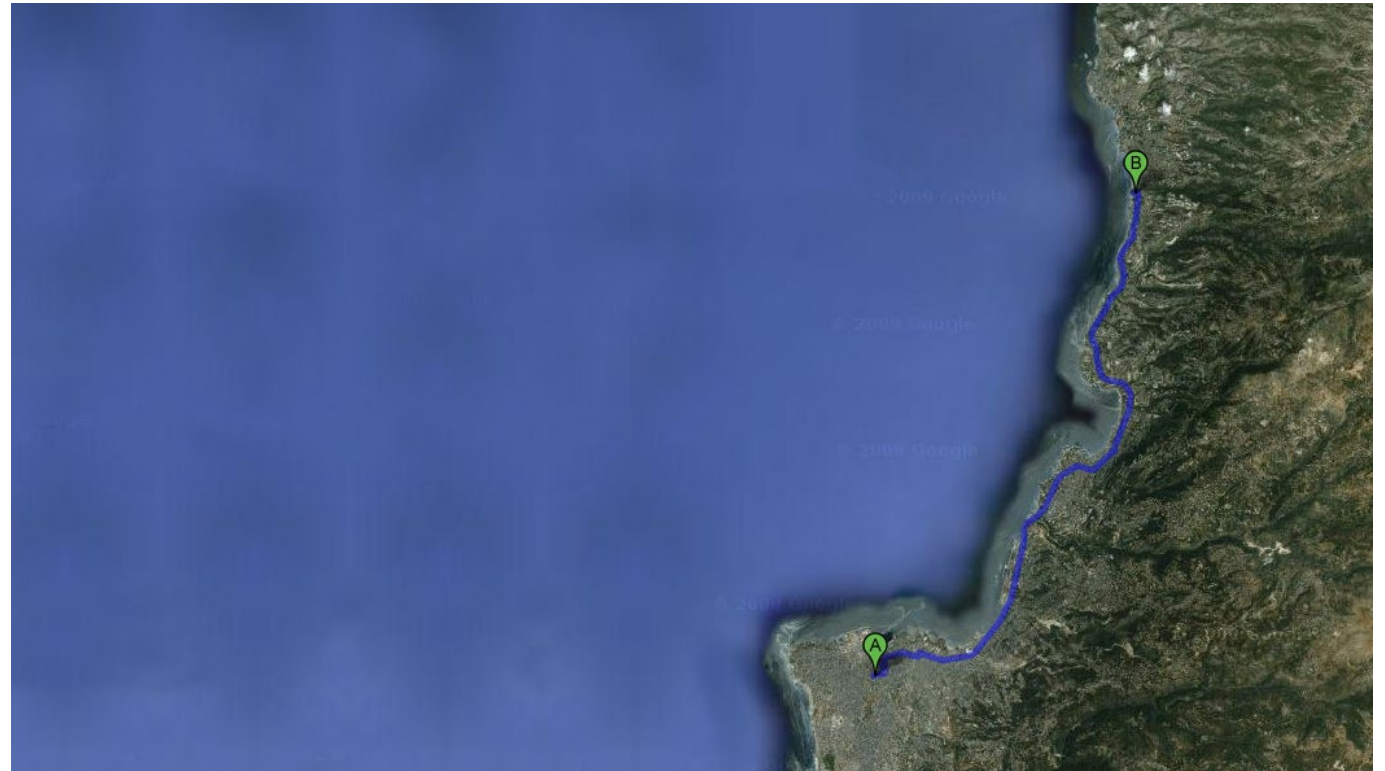


proximus<sup>living</sup>1  
The concept 01

- Proximus brings a new concept of living, with a series of cozy studios of different shapes and sizes, spread along the breathtaking Lebanese coast. True to its name, Proximus (Latin for “the nearest”) offers residences overlooking the sea, providing you with a pied-a-terre in a serene and comforting environment, away from urban noise.
- The proximus living development will initiate within Fidar area and will extend along the peaceful and green Lebanese coast.



proximus<sup>living</sup>1  
The location 02



- 3 km from Jbeil's old town and surrounded by several resorts like Halat Sur Mer, Edde Sands, etc. Residents of Proximus Living Fidar can escape to this magical city, where historical features blend with an exciting nightlife.
- 30 km from Beirut Central District.



- Plots 956 – Halat District – Jbeil.



- Fidar is one of the nicest and charming costal residential village in Jbeil. Bourj el Fidar is a historical monument dating back to the Mamlouk Era.



- The development is within close proximity of an old silk factory built in 1942, with a well-preserved architecture of the mid-twentieth century. The factory's arches, wood tiled rooftop as well as its neighboring bring charm and heritage to the location.





- The highlight of living in Proximus Fidar is the direct access to a breathless beach, through a pedestrian landscape alley.



- Residents of Proximus Living Fidar can enjoy a calm stroll through private and public gardens.

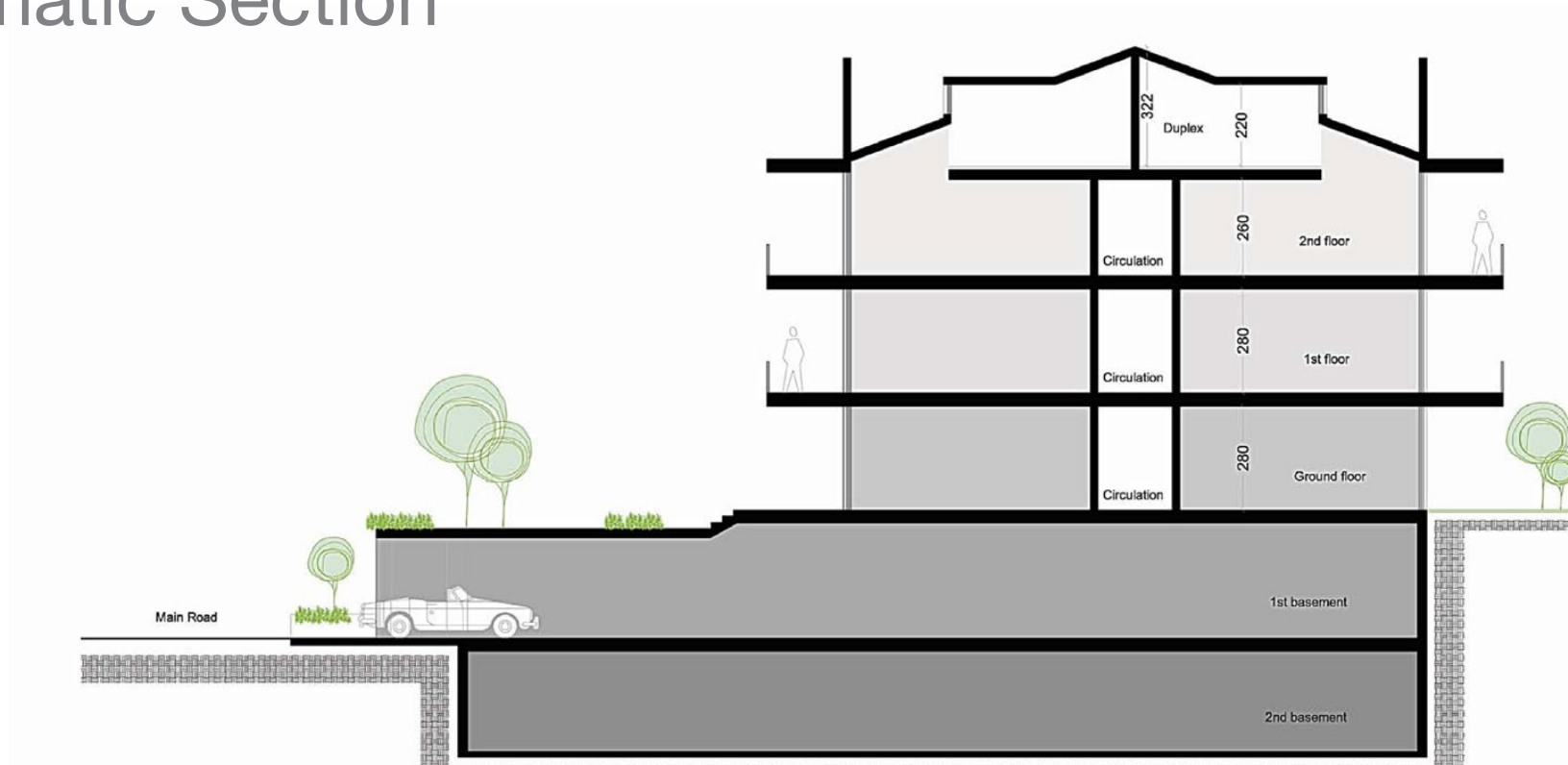
proximus<sup>living</sup>1  
The development 03

## Mass Plan



- Proximus Living Fidar is made up of 55 studios, ranging in size from 60sqm to 150sqm.

## Schematic Section

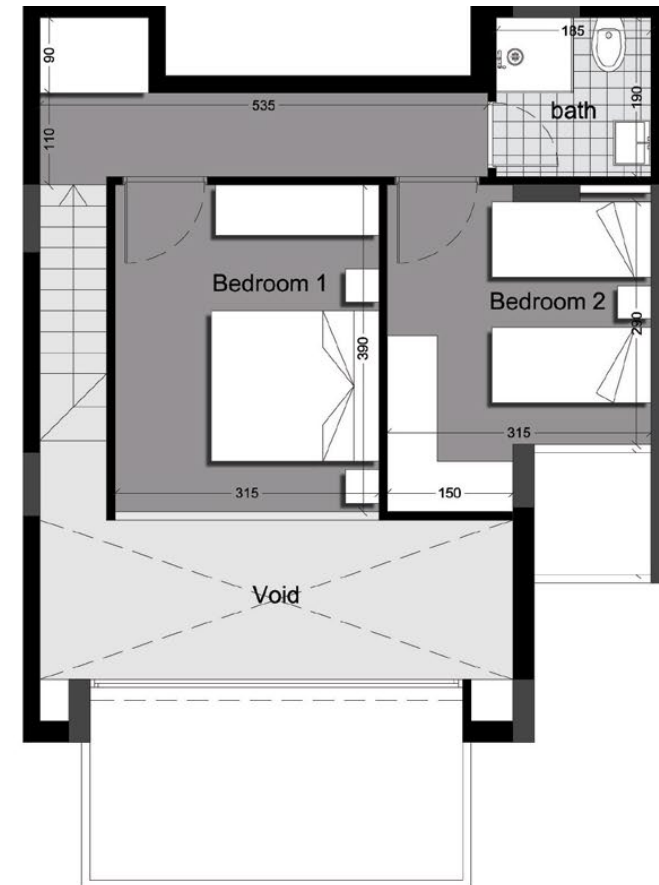
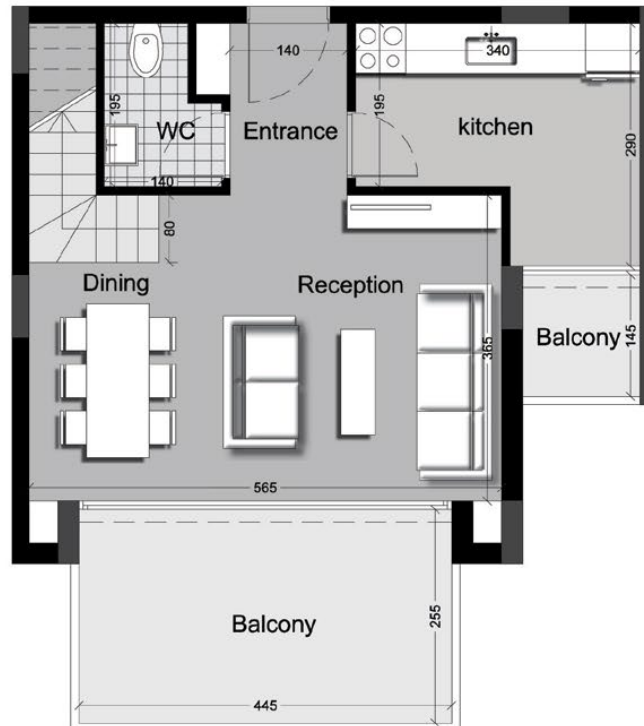


- The development consists of 3 levels, with a ground floor and first floor as simplexes' types, and 2nd floor as duplexes in addition to 2 parking basements.
- Studios are made of 1, 2 or 3 bedrooms, and are located on a sea or mountain side.



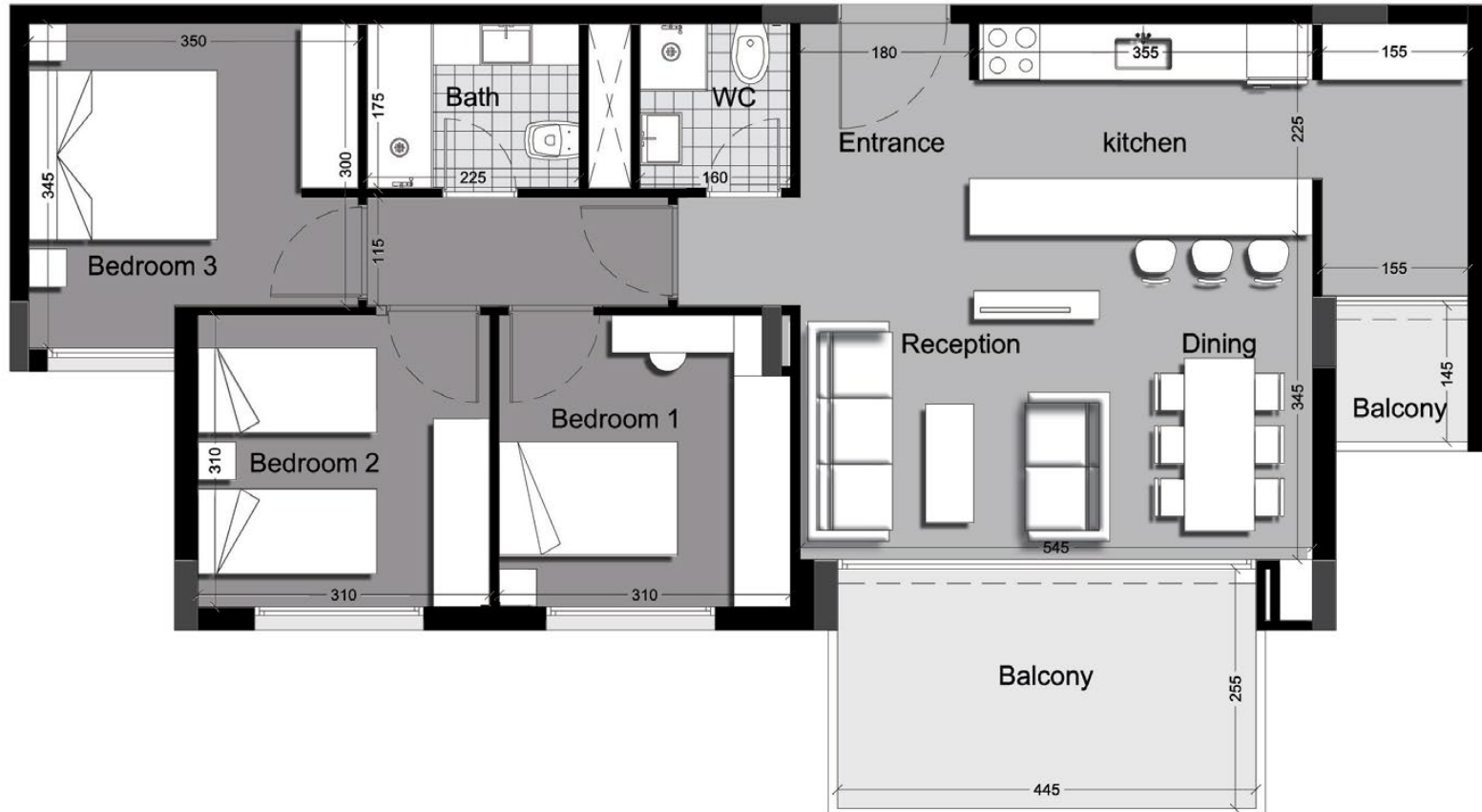
## 1 Bedroom Studio

- The space division varies from one studio to another. The above is a sample of 1 bedroom type.



## 2 Bedrooms Studio

- The space division varies from one studio to another. The above is a sample of 2 bedrooms type.



## 3 Bedrooms Studio

- The space division varies from one studio to another. The above is a sample of 3 bedrooms type.

T: 00961 1 560 611 M: 00961 3 616 087 [www.breisa.com](http://www.breisa.com)

proximus<sup>1</sup> *living*  
a creation by **BREI** 